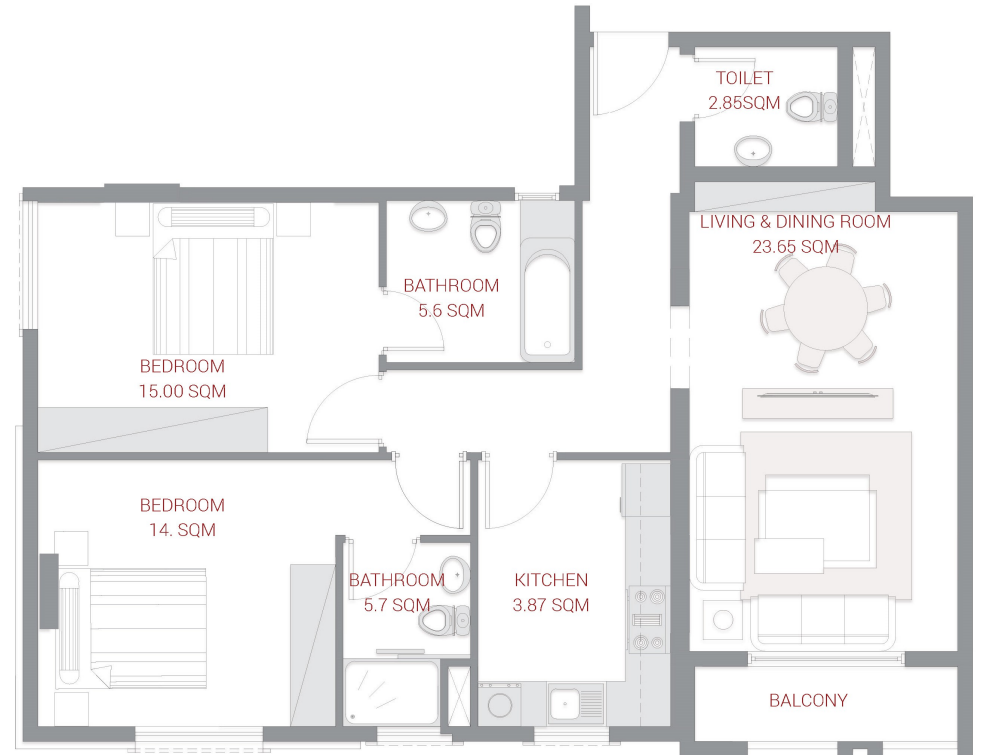
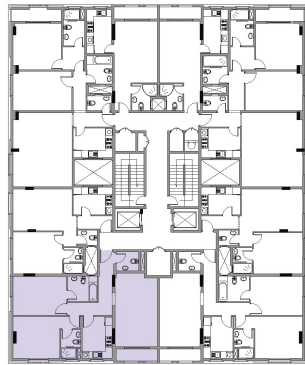
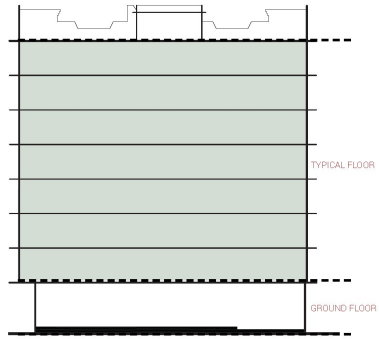


## TYPICAL FLOOR

# 2 BEDROOM TYPE 2 A

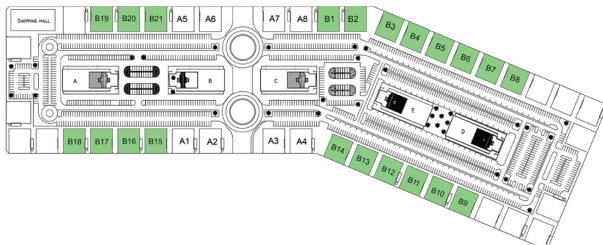
Series no: 07

Gross area 125.69 sqm 1370.57 sqft



SHIEIKH MAKTOUM BIN RASHID STREET

SHIEIKH MOHAMMED BIN ZAYED  
ROAD - E31



AL HAMIDIYA PARK